

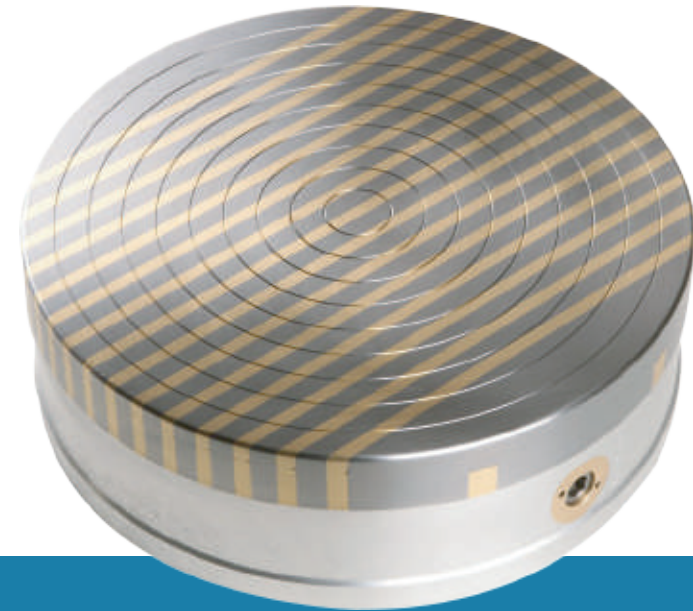
Ferromax



Circular grinding

CONSTRUCTION

- + Solid, silver brazed top plate with parallel poles
- + Pole division: 8 mm steel + 5 mm brass or 12 mm steel + 5 mm brass
- + Life span (regrinding limit): 7 mm
- + Double ferrite magnetic system
- + Lightweight aluminium body
- + Waterproof design
- + High nominal clamping force up to 140 N/cm² depends on the size of the chuck



APPLICATION

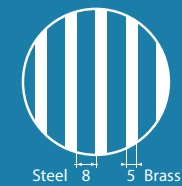
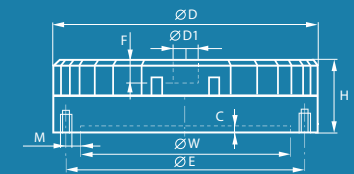
- + Turning and grinding
- + Optimal workpiece thickness: 8 and 12 mm respectively

SCOPE OF SUPPLY

- + Allen key

MOUNTING OF CHUCK TO MACHINE

The underside of the body has a recess and 3 or 4 threaded holes for mounting a suitable flange.



Model	D [mm]	H [mm]	W [mm]	C [mm]	F [mm]	M [mm]	E [mm]	D1 [mm]	Pole pitch	Weight [kg]
FER0200	200	78	150	4,5	22	4 x M8	182	22	T13 8+5	12
FER0250	250	78	200	4,5	22	4 x M8	232	22	T13 8+5	17
FER0300	300	78	250	4,5	22	4 x M8	285	22	T17 12+5	27
FER0350	350	78	300	4,5	22	4 x M8	334	22	T17 12+5	40
FER0400	400	78	300	4,5	22	6 x M10	375	22	T17 12+5	56
FER0450	450	102	350	5	22	6 x M10	400	22	T17 12+5	78
FER0500	500	98	400	5	22	6 x M10	450	22	T17 12+5	85