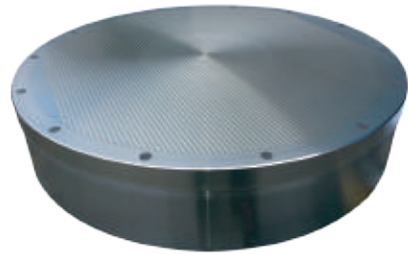


# EM – fine



Circular grinding



## CONSTRUCTION

- + Robust top plate with parallel poles
- + Standard pole pitch 5 mm (4 mm steel + 1 mm brass or epoxy)
- + Solid machined body with firmly embedded coils
- + Waterproof assembly
- + Standard electrical connection from centre bottom
- + Standard input voltage: 110 VDC
- + Nominal holding force: 100 N/cm<sup>2</sup>

## WORKPIECE

- + Minimum workpiece thickness and length 2 x 15 mm

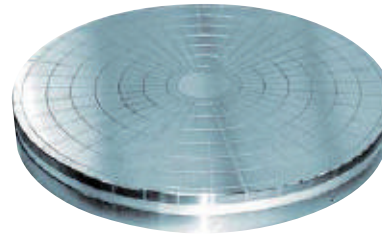
## APPLICATION

- + Mass grinding of small and thin workpieces

# EM – star



Circular grinding



## CONSTRUCTION

- + Robust top plate with radial poles
- + Solid machined body with firmly embedded coils
- + Standard electrical connection from centre bottom
- + Waterproof assembly
- + Nominal holding force: 120 N/cm<sup>2</sup>

## APPLICATION

- + Grinding of ring shaped components
- + Inside, outside and face grinding separately or in a single set up

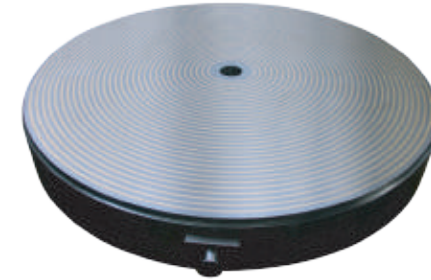
## OPTIONS

- + Centring hole in top plate
- + Top plate with threaded holes or T-slots
- + Set of pole shoes

# EM – ring



Circular grinding



## CONSTRUCTION

- + Robust top plate with concentric poles
- + Standard pole pitch 16 mm (11 mm steel + 5 mm brass or epoxy)
- + Solid machined body with firmly embedded coils
- + Centring recess and mounting holes according to customer's request
- + Waterproof assembly
- + Standard electrical connection from center bottom
- + Standard input voltage: 110 VDC

## WORKPIECE

- + Minimum workpiece thickness and length 5 x 55 mm

## APPLICATION

- + Series and mass grinding of medium up to large workpieces